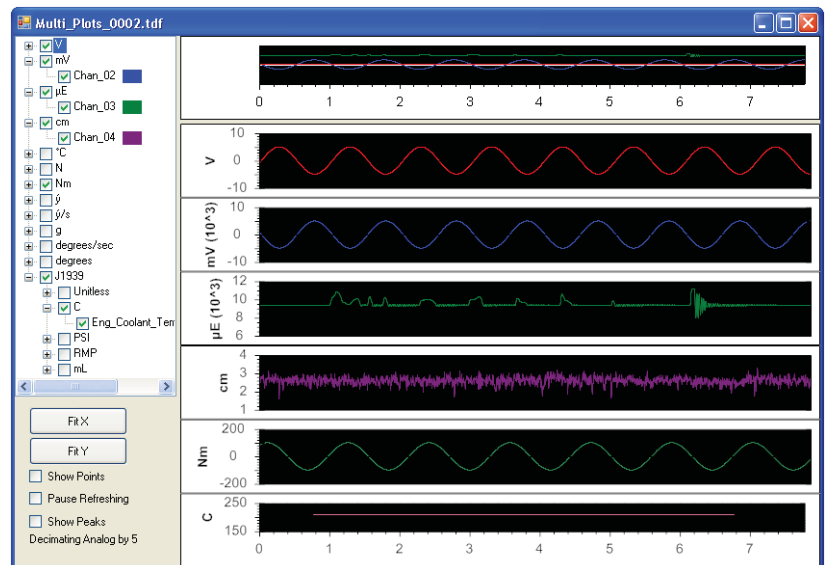


Titan Control Software (TCS)

Custom applications software supporting all Titan Data Acquisition (DAQ) devices

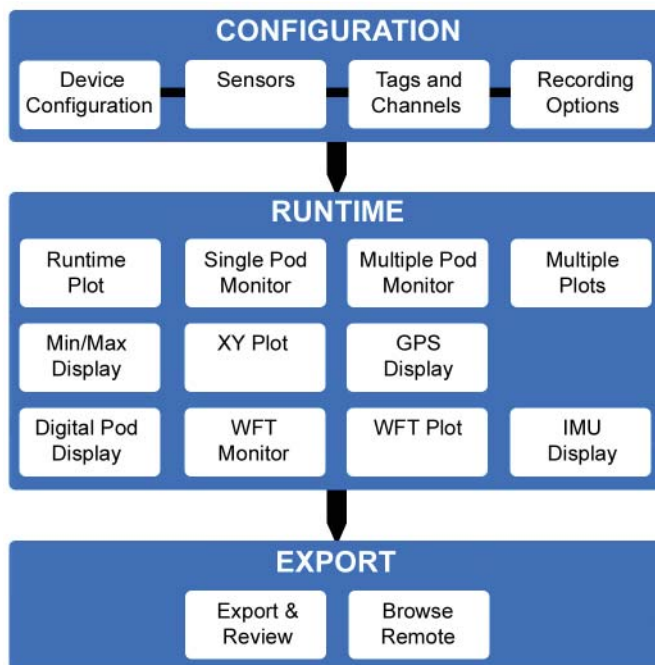
Key Features:

- Provides configuration, acquisition, display and storage of analog and digital sensor data
- Real-time data monitoring
- Exports in a variety of standard formats (WAV, CSV, TSV, RPC III, HDF5, MATLAB, & BLOB)
- Single and Multiple Pod Monitoring
- Selectable Multiple Plot Display
- Min/Max Display with Averaging
- XY Plotting option
- Dedicated displays for GPS, WFT, IMU and Digital data
- Recording Scheduler
- Advanced Triggering Options
- Alarm Notification
- Pseudo Channel support
- Sensor Import/Export
- Metadata Display
- Connection Logger
- Customizable 'In-Vehicle' Display
- Compatible with all Windows operating systems



TCS Architecture:

TCS allows you easily configure any Titan DAQ device for local (connected) or remote acquisitions. The TCS user interface is partitioned into three main functional areas (windows), each containing a number of related tabbed screens. The three functional areas provide for convenient device setup ("Configuration"), real-time data monitoring while scanning/recording ("Runtime"), and review and storage of acquired data ("Export"). Expanded descriptions appear below.



CONFIGURATION: Allows you to configure basic device settings (speed, scan rate, filter, etc), import sensors, configure analog and digital sensor types, assign sensors to channels, set basic channel parameters (gain, balance, calibration, etc.), and select recording options (scheduled recordings, triggered recordings, and alarms).

RUNTIME: A series of display screens that allow you to view and monitor sensor data in real-time. Any channel or group of channels can be viewed both graphically and numerically, and some displays permit analog and digital sensor data to be viewed together simultaneously. Some display screens feature a 'detach' option that opens into a second window for side-by-side viewing. Dedicated digital displays provide monitoring of digital data (CANbus), Wheel Force Transducer (WFT), Global Positioning (GPS), and Inertial Measurement Unit (IMU) information. Local & Remote recording functions are located here, as well as device calibration and channel balancing functions.

EXPORT: Allows you to select, review and analyze recorded files, and export the files in a variety of standard formats. A Review window provides a convenient overview of the data file, with magnified viewing options and sample point toggling. A dedicated FFT Review window permits FFT analysis with variable window sizing. A 'Browse Remote Files' screen allows you to transfer recorded files directly from a Titan device or other source into TCS for analysis and exporting.

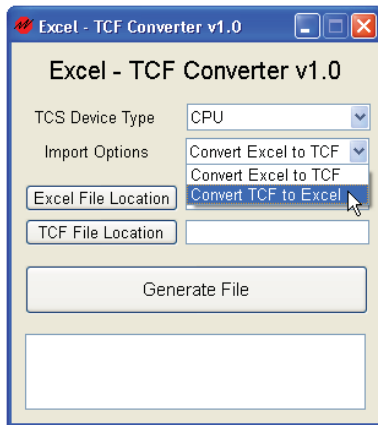


Expand the capabilities of Titan Control Software (TCS)
with the Titan Service Pack

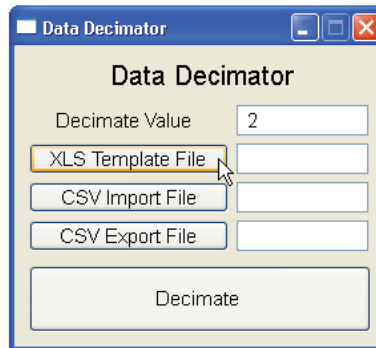
Titan Service Pack

The Titan Service Pack includes five of the most requested utilities to enhance TCS functionality and simplify common Titan hardware operations. The Titan Service Pack includes:

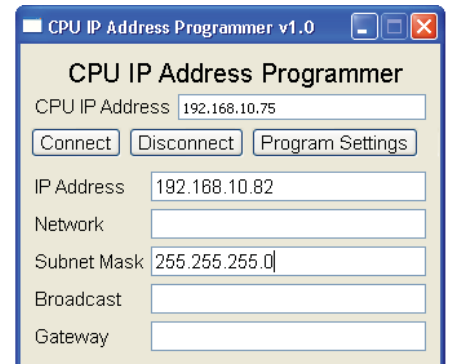
- **TCS 'Tags & Channels' Importer/Exporter** – Enables exchange of channel data to/from an Excel spreadsheet
- **Titan Dataset Decimator** – Permits decimation of sensor data on selected dataset channels
- **GPS to KML Exporter** – Converts TCS GPS data to Keyhole Markup Language (KML) for display of geographic data in an Earth browser such as Google Earth
- **Titan CPU Firmware Updater** – Firmware updater utility for the Titan CPU08
- **Titan CPU IP Address Programmer** – Utility for changing the IP address of the Titan CPU08



Tags & Channels Importer/Exporter



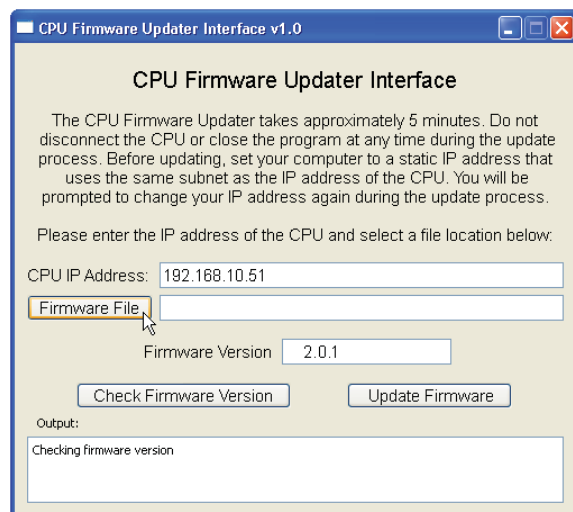
Dataset Decimator



CPU Address Programmer



GPS to KML Exporter



CPU Firmware Updater